



POA-1978-272-M7 Wrangell Narrows
Piston & Rudder March 14, 2013
Sheet 1 of 5

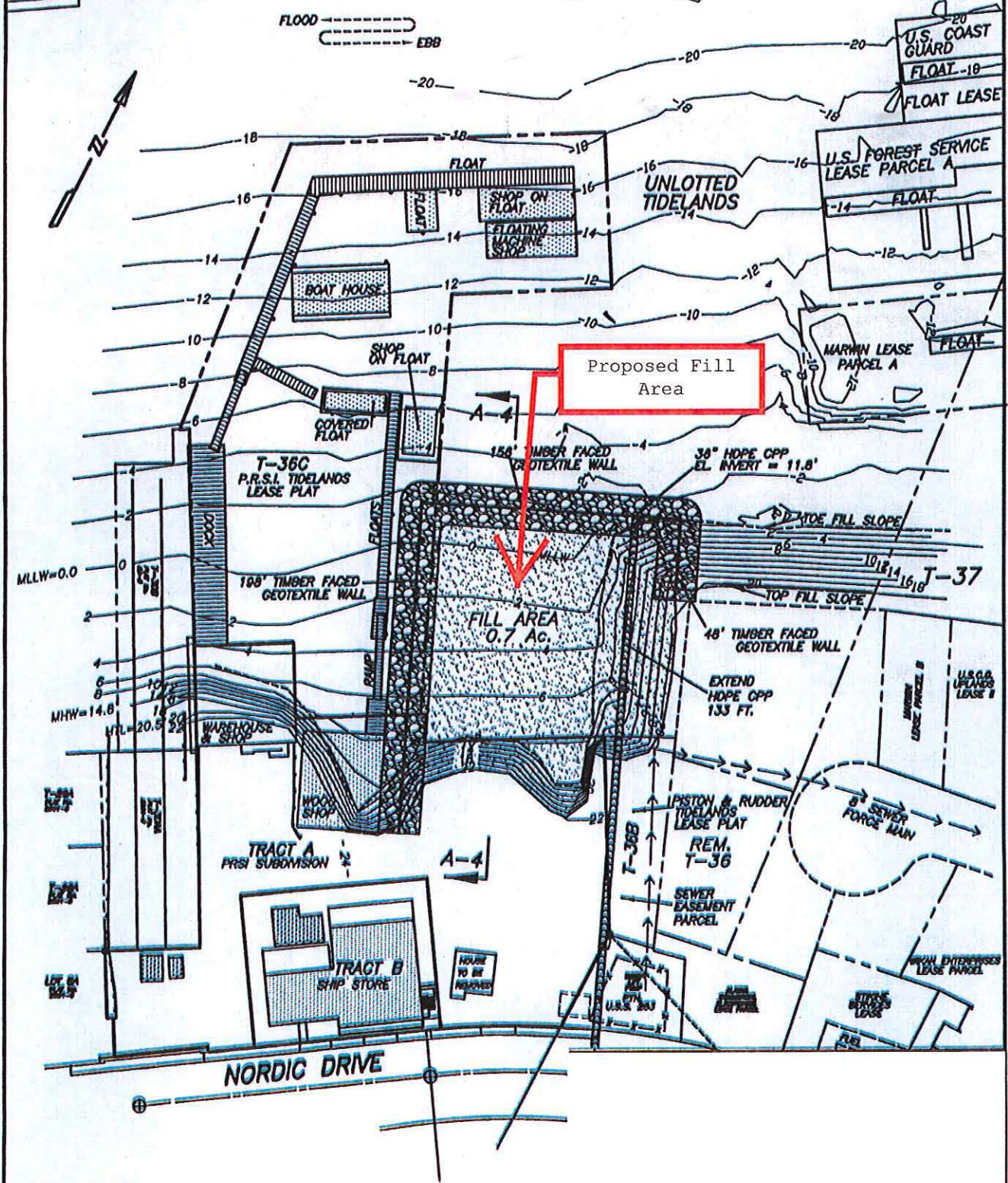


POA-1978-272-M7
Project Location

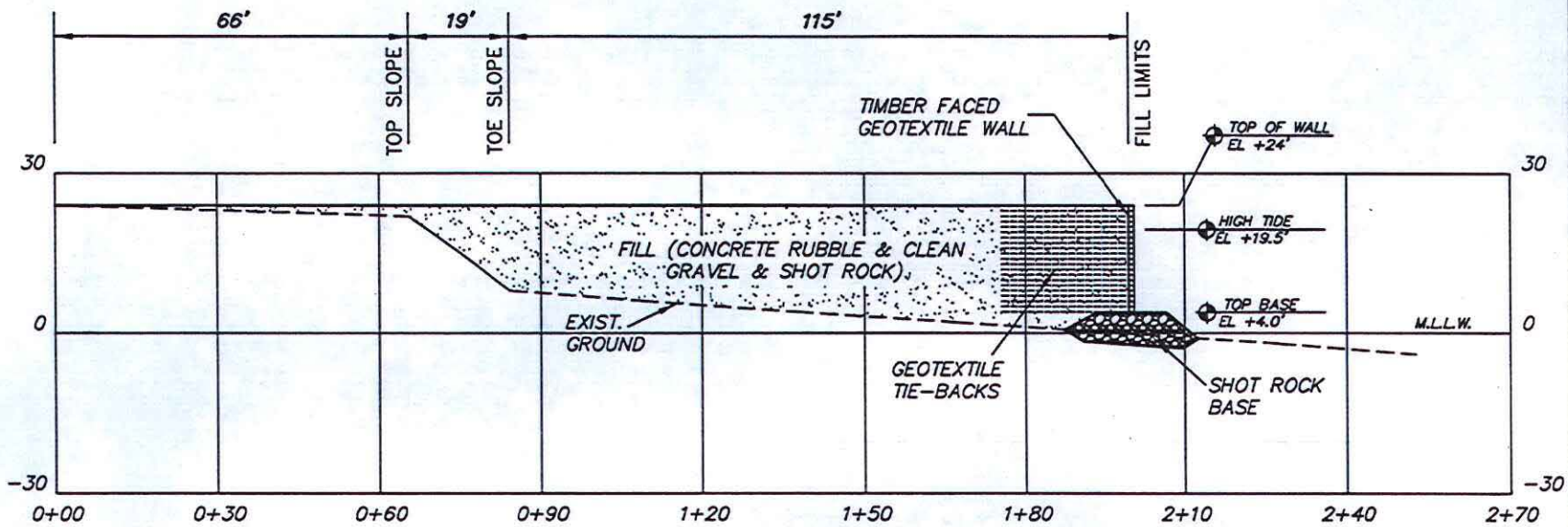
POA-1978-272-M7 Wrangell Narrows
Piston & Rudder March 14, 2013
Sheet 2 of 5

ALASKA MARINE HIGHWAY
PETERSBURG MOORING
NORTHEAST DOLPHIN

WRANGELL NARROWS



POA-1978-272-M7
Piston & Rudder
Wrangell Narrows
March 14, 2013
Sheet 4 of 5



**TYPICAL SECTION A-3
RETAINING WALL & FILL**

TIDAL DATA

| | |
|-----------------------------|-------|
| EXTREME HIGH WATER (EHW) | 20.5' |
| HIGH TIDE LINE (HTL) | 19.5' |
| MEAN HIGH WATER (MHW) | 15.8' |
| MEAN LOWER LOW WATER (MLLW) | 0.0' |
| EXTREME LOW WATER (ELW) | -4.5' |

SUMMARY OF APPROXIMATE QUANTITIES

| | |
|--------------------------------|---------------|
| FILL: | |
| AREA BELOW HIGH TIDE LEVEL | - 0.69 ACRES |
| TOTAL AREA | - 0.70 ACRES |
| QUANTITY BELOW HIGH TIDE LEVEL | - 14,000 C.Y. |
| TOTAL QUANTITY | - 14,600 C.Y. |
| SHOT ROCK IN BASE | - 1,790 C.Y. |
| LENGTH OF RETAINING WALL | - 402 FT. |
| LENGTH OF H.D.P.E. CULVERT | - 133 FT. |

BACK OF SIDEWALK

88.8'

POA-1978-272-M7 Wrangell Narrows
 Piston & Rudder March 14, 2013
 Sheet 5 of 5